

**REPT
BATTERO**

TSINGSHA

PASSENGER VEHICLES

REPT ENERGY

DRIVING A SUSTAINABLE FUTURE



COMPANY

INTRODUCTION

»» Tsingshan Holding Group

Tsingshan Industry has invested in the new energy field by combining its rich mineral resources. Adhering to the mission of 'Refining a hundred years of stainless steel, building a green future', REPT BATTERO enjoys the unique resource integration ability and synergy advantage of the whole industrial chain conferred by Tsingshan Industry, and has become one of the fastest-growing battery producers in the industry.

»» REPT BATTERO

REPT BATTERO Energy Co., Ltd. was established in 2017. As the first new energy enterprise deployed by Tsingshan Industrial, a Fortune Global 500 company, it focuses on the R&D, production, and sales of lithium-ion batteries, providing solutions for new energy vehicle power and smart energy storage.

The company has R&D centers in Shanghai, Wenzhou, and Jiaxing, and production bases in Wenzhou, Jiaxing, Liuzhou, Foshan, and Chongqing. Its first overseas battery factory in Indonesia is under construction. By 2025, the company's total production capacity is expected to exceed 90GWh.

In 2024, it ranked 5th globally in energy storage cell shipments, 2nd globally in household energy storage battery shipments, 3rd nationwide in new energy heavy-duty truck installation volume, and 6th domestically in lithium iron phosphate (LFP) power cell shipments. In the first half of 2025, it ranked 2nd nationwide in heavy-duty truck battery shipments. In the first three quarters of 2025, it ranked 1st globally in both household energy storage battery shipments and commercial & industrial energy storage battery shipments.

NO.1

Global stainless steel crude steel production output

NO.1

Global nickel metal production output

NO.247

Fortune global 500 companies in 2025

185000+

Total employees in 2025

BNEF Tier1

Bloombergnef tier 1 energy storage manufacturers

\$ 2.5 Billion

Sales revenue in 2024

»» Main Business

Supplying power battery systems and services for green transportation networks



Cells



Modules



Battery Packs

Supplying solutions and services for clean energy storage



Electrical Cabinet



Energy Storage Systems



Energy Storage Stations

»» Manufacturing Plant



WENZHO, CHINA



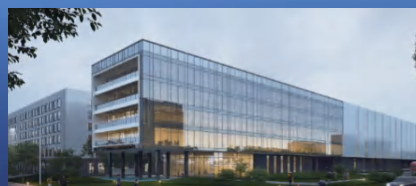
LIUZHOU, CHINA



CHONGQING, CHINA



JIAXING, CHINA



FOSHAN, CHINA



MALUKU, INDONESIA

Passenger Vehicle Battery Product Matrix

BEV Series



Capacity	106Ah	132.5Ah	141Ah	143.5Ah	150Ah	171Ah	175Ah
Rated voltage (V)	3.2V	3.2V	3.2V	3.2V	3.2V	3.2V	3.2V
Energy density	177Wh/kg	177Wh/kg	188Wh/kg	180Wh/kg	170wh/kg	188wh/Kg	185Wh/kg
Size(mm)	52*148*115	44*220*115	50*208*103	83*164*90	54*173*145	60*194*112	40*300*112
Fast Charging 10%~80%	2.2C	2C	2C	2C	1.2C	1.5C	3C
Weight	1.91± 0.02kg	2.41± 0.02kg	2.45± 0.02kg	2.57± 0.02kg	2.87± 0.02kg	2.94 ± 0.2 kg	3.03± 0.02kg

PHEV Series



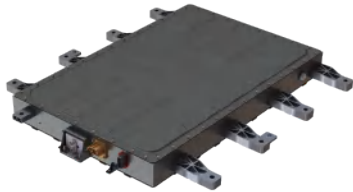
Capacity	54Ah	65Ah	79Ah	104Ah	120Ah
Rated voltage (V)	3.2V	3.2V	3.2V	3.2V	3.2V
Energy density	165Wh/kg	170Wh/kg	173Wh/kg	180Wh/kg	190Wh/kg
Size(mm)	30*194*87	34*183*92	52*148*95	52*148*115	52*148*117
Fast Charging 10%~80%	2C/10C	8C	2.2C	2.2C	2.2C
Weight	1.082±0.02kg	1.253 ±0.02Kg	1.52 ± 0.02 kg	1.88 ±0.02Kg	2.07 ± 0.02kg

Passenger Vehicle Battery Pack Product Matrix

Fuel-saving PACK

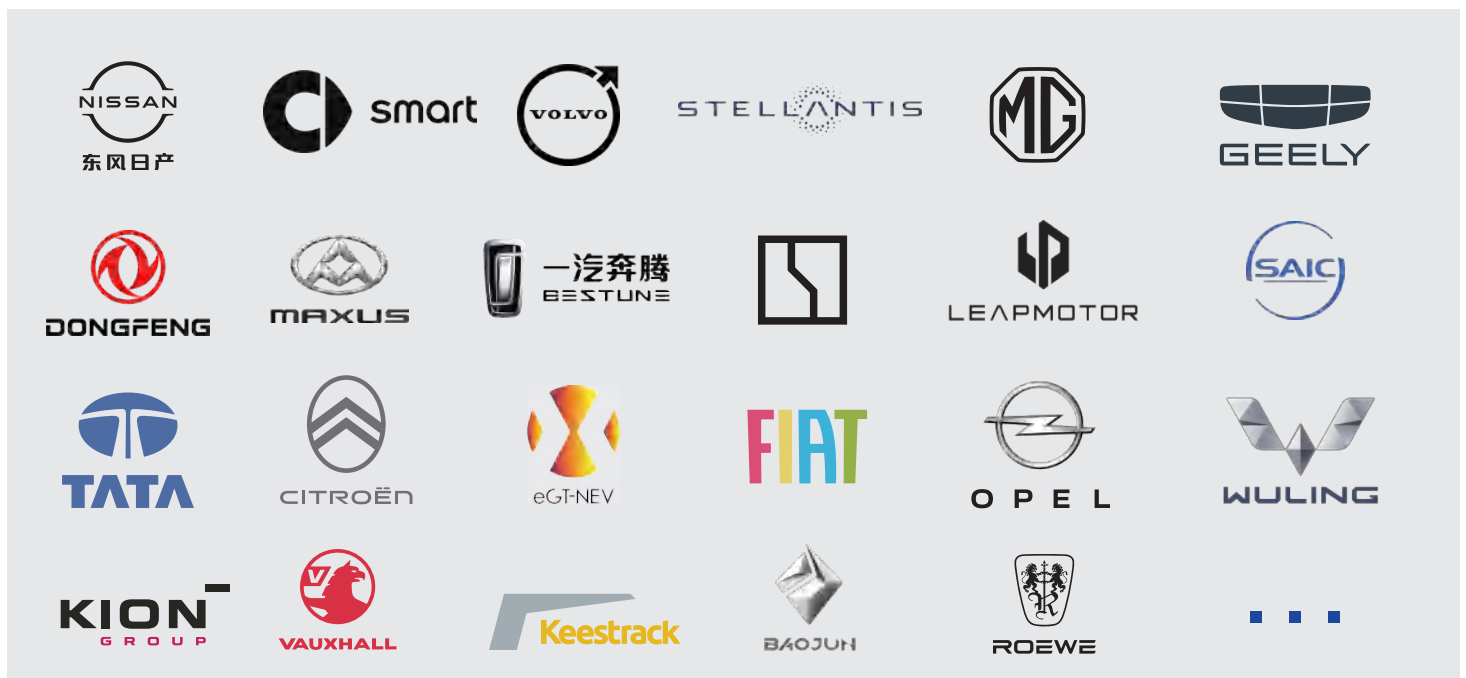
Green CTP PACK

4C Fast-Charging CTP

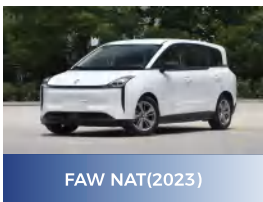


Project	Parameter	Parameter	Parameter
Battery Type	LFP	LFP	LFP-107.5
Pack Energy (kWh)	10	67.62@1/3C	66.46
Pack Dimension(mm)	1098*716*120	1380.36*1347.76*146.41	1628*1399*142
Operating Voltage Range (V)	240-438	300-438	384-700.8
Nominal Voltage (V)	380.4	386.4@1/3C	579.6
Charging Time (min@10-80%SOC)	34	16	10
Peak Charging Power (KW)	66kW@10s	192@25°C, 10s.SOC50%	259@25 C,10s,50%SOC
Peak Discharging Power (KW)	133kW@10s	468@25°C,10s. SOC50%	306@25 C,10s,50%SOC
Thermal Management	Direct cooling and film heating	Liquid cooling	Liquid cooling or direct cooling
IP Level	IP67 & IPX9K	IP68	IP67
Connection Mode	Quick plug	Quick plug	Quick plug
Communication Mode	CAN	CAN	CAN
Operating temperature (°C)	-30-55	-30-60	-30-60
Cell Capacity(Ah)	28	175@1/3C	107.5 @1/3C
Cell Nominal Voltage (V)	3.17	3.22@1/3C	618.24V2@1/3C
Cell Energy Density (Wh/kg)	140	185@1/3C	≥142Wh/kg
Cell Dimension (mm)	26.5*148*85	40300112	40*194*112.6
Application Field	PHEV	BEV	BEV

Collaborative Brands



Application Models



ESG Management

- Supply Chain Traceability Management 01
- Energy Utilization 02
- Battery Recycling 03
- Waste Emissions and Utilization 04
- Employee Production Safety and Health 05
- Corporate Social Responsibility System 06

ESG

ESG Achievements

- "Participating Companies in the United Nations Global Compact (UNGC) 'SDG Ambition Accelerator'"
- Responsible Business Alliance (RBA) Silver Level Certification
- GB/T 39604-2020 Corporate Social Responsibility Management System Certification
- 2024 Greenlight ESG List Exemplary Case - Exemplary Innovation Contribution List TOP10
- The "2024 Annual Innovation Award - Energy Conservation and Emission Reduction Technology Progress Award" and the "Carbon Neutrality Field Technology Progress Award" issued by the China Energy Conservation Association and the China Quality Certification Center.

- Liuzhou Base was awarded Guangxi Zhuang Autonomous Region GreenFactory
- Liuzhou Base was awarded Guangxi Intelligent Demonstration Manufacturing Enterprise
- Jiaxing Base was awarded Jiaxing city Green Factory
- Wenzhou Base and Liuzhou Base were awarded National-level Green Factory

We will establish a development system aligned with the United Nations Sustainable Development Goals, creating a safe and healthy workplace for all employees and a green, eco-friendly community environment to ensure sustainable and rapid growth.

Global Industrial Layout

■ Annual production of 30,000 tons of battery-grade cobalt sulfate

■ Annual production of 20,000 tons of AG artificial graphite

■ > 9 million tons of nickel metal reserves

■ Resource integration and synergy



● Planned Production Capacity For 2025
90GWh+

● R&D Center
Jiaxing | Shanghai
Wenzhou

● Production Base
Wenzhou | Jiaxing | Liuzhou
Foshan | Chongqing | Indonesia

● Indonesia Base
Under Construction

REPT BATTERO Energy Co.,Ltd.

📍 **R&D Center**
Jiaxing Wenzhou Shanghai, China
Email:market@reptbattero.com

📍 **Production Base**
Wenzhou Jiaxing Liuzhou Foshan Chongqing, China
Indonesia
Email:market@reptbattero.com

📍 **American Subsidiary**
REPT BATTERO AMERICAN CORPORATION
Address:California USA
Email:info.us@reptbattero.com

📍 **German Subsidiary**
REPT BATTERO ENERGY GERMANY GMBH
Address:Munichen Germany Subsidiary
Email:market@reptbattero.com

📍 **Indonesian Base**
Address: Maluku Indonesia
Email:market@reptbattero.com

📍 **Australian Subsidiary**
REPT BATTERO AUSTRALIA PTY LTD
Email:info.us@reptbattero.com



STOCK CODE
0666.HK